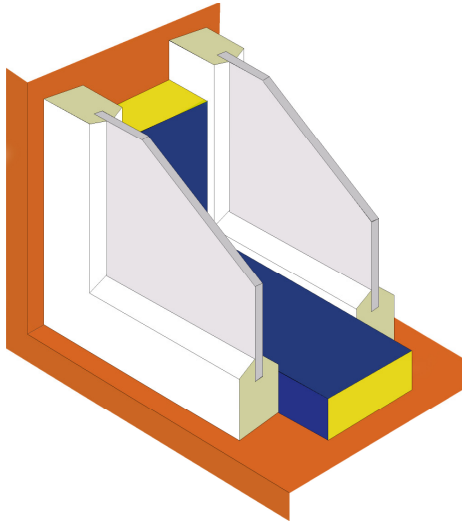


Introduction



WRX Sound Absorbing Window Reveal Liners

Lamaphon WRX sound absorbing window reveal liner system is a decorative and robust reveal liner for use in secondary glazing

Lamaphon WRX Window Reveal Liners provide a practical means of improving the sound insulation performance of secondary glazed windows.

Their application to the reveals substantially reduces the reverberant sound field in the void formed between the primary and secondary glazing.

Traditionally, reveal liners have been formed by cutting strips of semi-decorative board products such as ceiling tiles. Unfortunately, numerous practical problems are associated with these materials for this application.

They include: poor resistance to moisture, colour fading, impracticality of cleaning, moisture staining, limited lengths, unattractive cut edges and generally poor sound absorption characteristics.

Description

Lamaphon WRX Window Reveal Liners comprise an absorptive core of dense rock-fibre insulation held within a covering of perforated sheet metal, which is formed around the sides and top of the core.

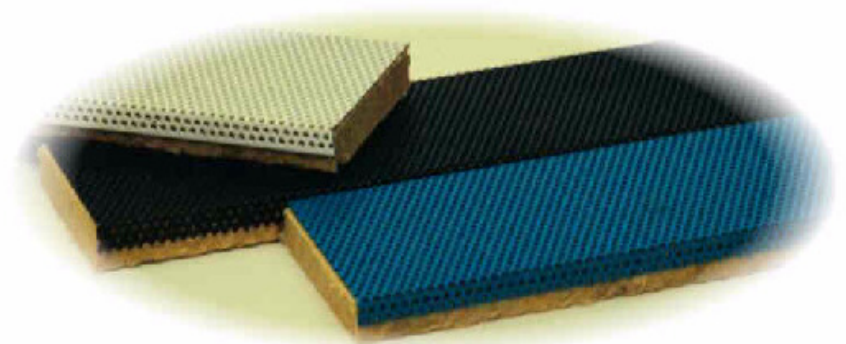
The dense rockfibre core is of a special construction to provide improved impact resistance. As standard the core is faced on both surfaces with a non-woven glass fabric to provide anti-dusting characteristics whilst remaining acoustically transparent.

The perforated metal covering is normally finished by either polyester powder coating or for aluminium versions by anodising as required.

Where the end of the installed liner would not normally be hidden, such as at corner junctions or for long reveals at butt joints, the metal covering is additionally formed over the end of the liner to provide a neat final appearance.

Special Benefits

- ✓ **Excellent sound absorption properties**
- ✓ **Unaffected by moisture or UV**
- ✓ **Supplied to exact dimensions**
- ✓ **Extensive colour range**
- ✓ **Maintenance free**
- ✓ **Simple to fix**





Finishes

Lamaphon WRX Window Reveal Liners are supplied finished in a white Polyester Powder Coating (PPC) as standard. They can however be finished to any stock PPC RAL colour. Lamaphon WRX Window Reveal Liners can also be produced using stainless steel or aluminium instead of the standard coated galvanised mild steel. Aluminium versions can be supplied anodised to any of the normally available commercial colours.

Dimensions

Lamaphon WRX Window Reveal Liners are manufactured to order and therefore can be produced to any practical dimensions. The following sizes are for guidance only and do not represent specific manufacturing limits:

Thickness: 15 - 75mm

Width: 30 - 500mm

Installation

Lamaphon WRX Window Reveal Liners are normally attached directly to the reveals by through fixing using screws with colour matched heads or caps. Alternatively, they can be retained at their edges by metal angle sections of a matching finish.

Angle sections are also useful in concealing any variable gap formed between the liner and the frame due to variations in the reveal width.

The Reveal Liners can also be supplied in an 'edge notched' version. This permits their use in circular windows or any other application involving curved surfaces.

Acoustic Performance

The sound reduction performance of a secondary glazed window is increased by the application of a sound absorptive material to the reveals. The level of improvement is influenced by a number of factors. Two of particular significance are:

- ✓ The ratio of the treatment area to the total internal surface area of the window void.
- ✓ The sound absorption coefficient of the applied liner.

The sound absorption characteristics of Lamaphon WRX Reveal Liners alters with the liner thickness and method of mounting e.g. direct to a solid background or suspended above a cavity. Our technical department can provide indicative absorption data for the specific arrangement under consideration.

Typically the improvement in the SRI (Mean Sound Reduction Index) of the window is in the range 2 - 4 dB.

Fire Performance

BS 476, Part 7: Class 1.

BS 476, Part 6: $I < 12$, $I_{(1)<6}$

From the above the product meets the requirements of Class 'O' to Building Regulations

Thermal Performance

Thermal conductivity (I) = 0.040 W/m.K
(Rockfibre core only)

Maintenance

Lamaphon WRX Window Reveal Liners require no maintenance other than periodic cleaning by light vacuuming or wiping with a damp cloth.